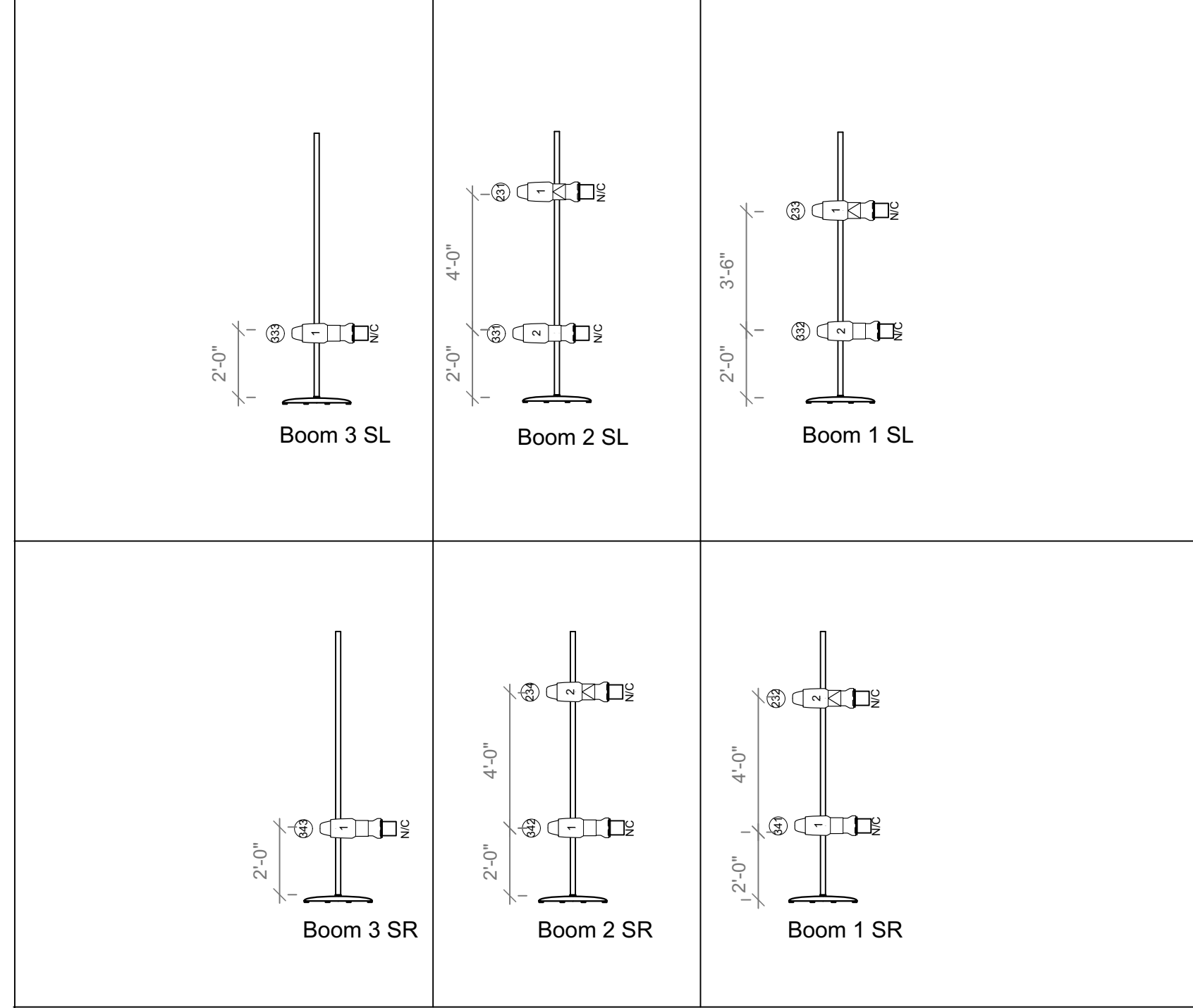
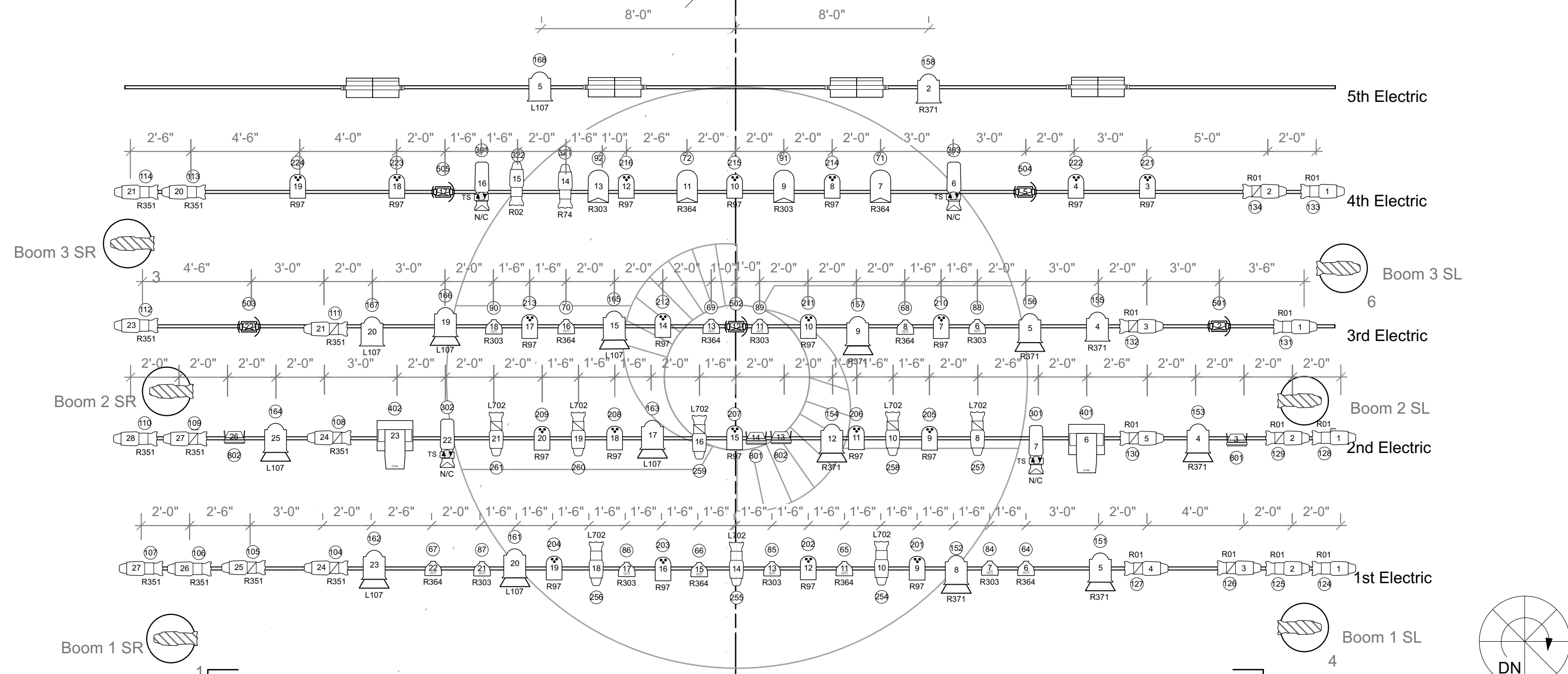


25
24
23
22
21 5th Electric: Trim: 25' 0"
20 Gear Legs: Trim: TBD
19
18 4th Electric: Trim: 26' 0"
17
16 Gear Border: Trim: TBD
14
13 3rd Electric: Trim: 25' 0"
12
11
10
9 2nd Electric: Trim: 25' 0"
8
7
6
5 1st Electric: Trim: 25' 0"
4
3 Act Curtain: Trim +20'-0"
2
1



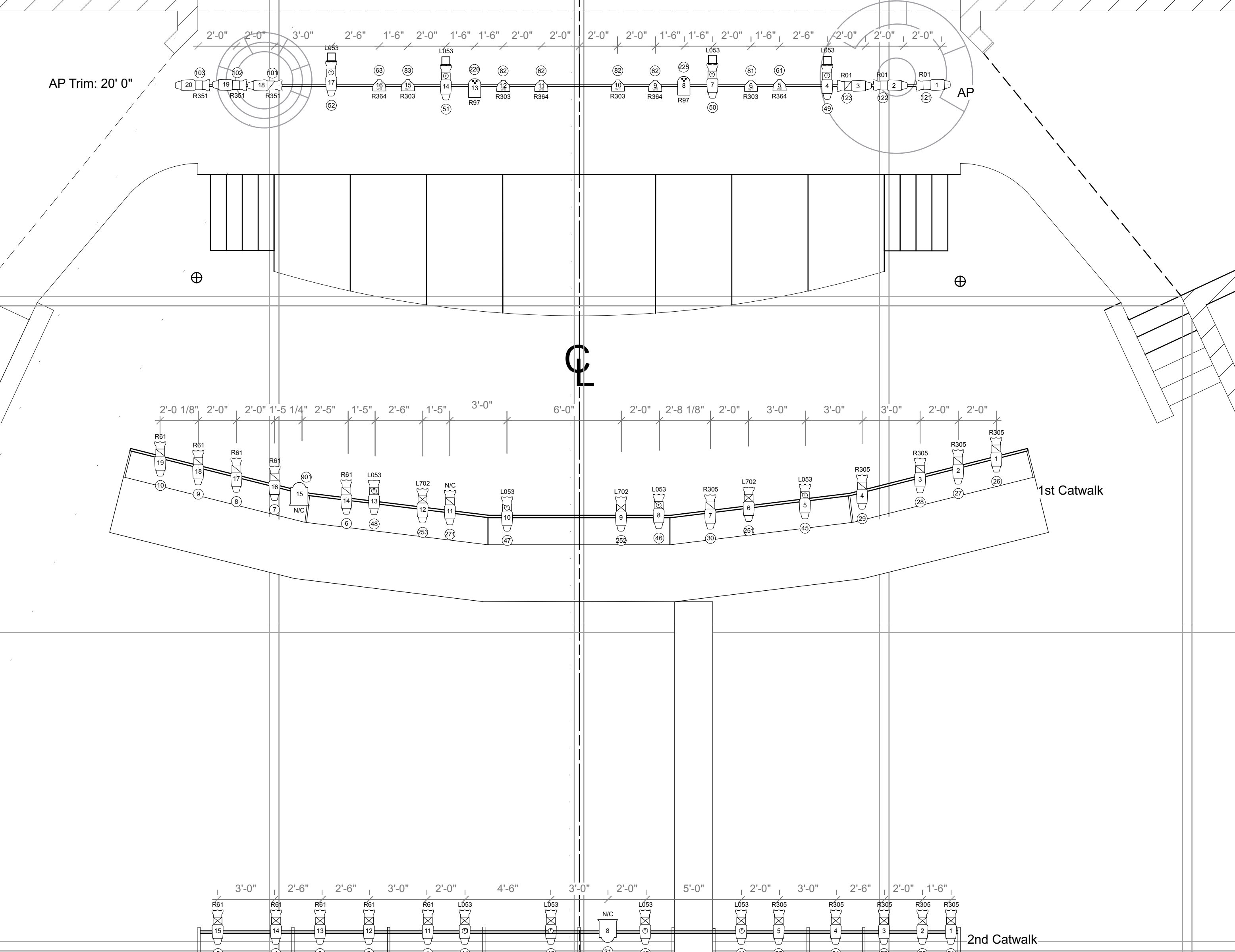
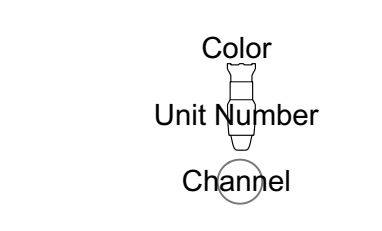
NOTE: BOOM PLACEMENT ON PLOT IS APPROXIMATE AND IS TO BE PLACED BY DESIGNER ON SITE

- Major Revisions:**
1. Pixellines will not be used and have been removed from the plot
  2. Instruments on Booms have shifted slightly to focus onto the revolve.
  3. 4 LED Pars from 4th Electric have been shifted in focus and 2 LED Pars have been moved to AP.
- Note:**
1. The Cyc units on 5th Elect. are only drawn in for reference if the projections do not come in. These do not need to be hung and given color.

KEY

- Source 4 19 750W
- Source 4 26 750W
- Source 4 36 750W
- Source 4 50 750W
- Source 4 LED Lustr 50
- Source 4 Par, WFL 750W
- 8" Fresnel 2000W
- PAR 64 WFL 1000W
- Expolite Studio Par
- Pixelline 1044
- VL 2500 Spot
- Martin MAC 101

LEGEND



MTSU Theatre and Dance Presents	
Metamorphosis by Steve Moulds	Directed by Halena Kays
Stage Manager Megan Inmon	
Tucker Theatre, Middle Tennessee State University	
Light Plot	
Lighting Designer Ron Collins	
Assistant Lighting Designer John Canaday	Production Electrician Brian Elliott
Lighting Supervisor Darren E. Levin	Production Manager Justin Reed
Scenic Designer Scott Boyd	Production Manager Justin Reed