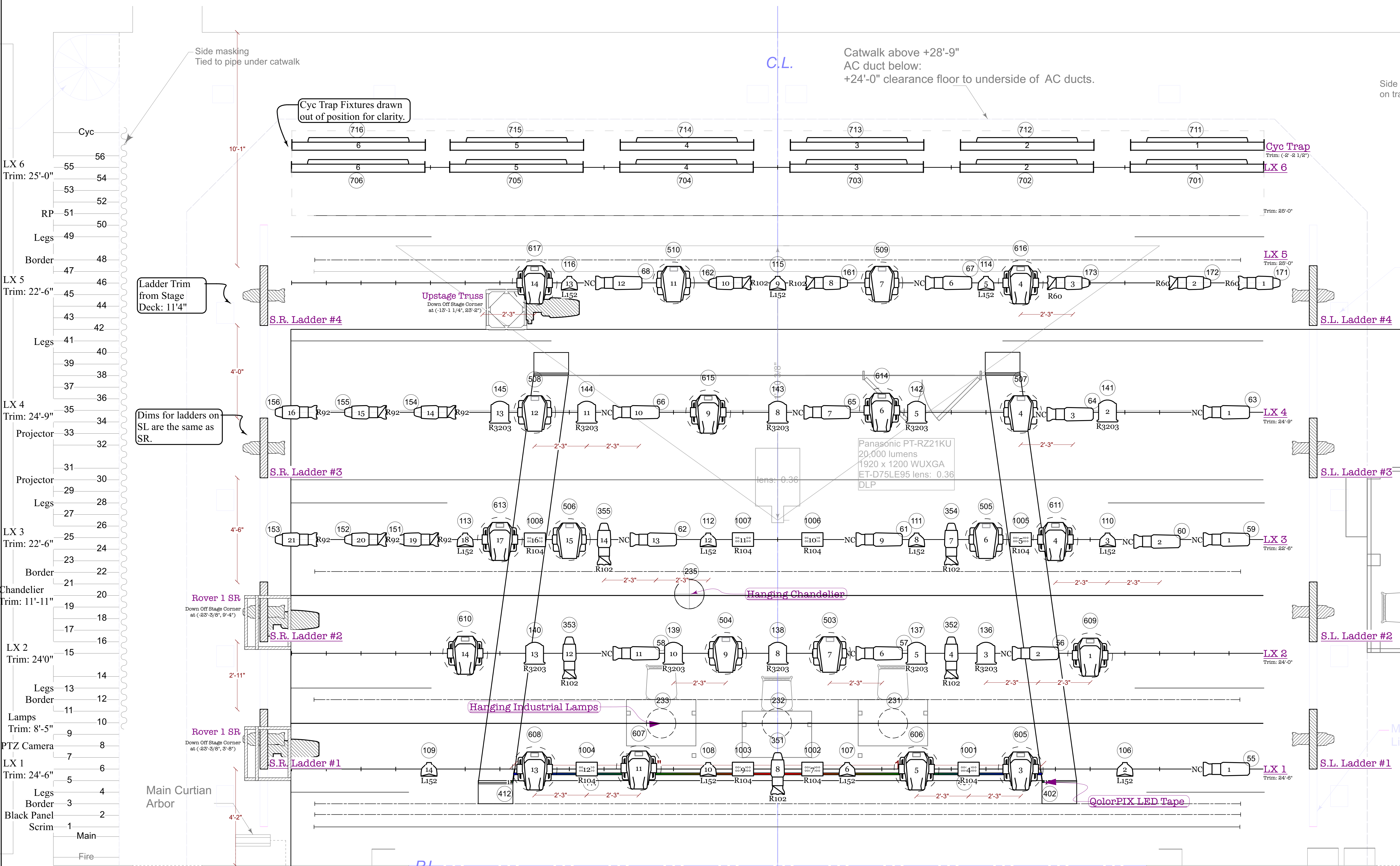


Symbol Key

- High End SolaHyBeam 1000 @ 600 w
- High End Systems SolaFrame 750 @ 562 w
- ETC Source4 10deg @ 575w
- ETC Source4 19deg @ 575w
- ETC Source4 26deg @ 575w
- ETC Source4 36deg @ 575w
- ETC Source4 LED 36deg @ 140w
- ETC Source4 PAR MFL @ 575w
- ETC Source4 PAR WFL @ 575w
- Altman 8in Fresnel @ 1kw
- ChromaQ Colorforce II 72 @ 800 w
- ETC Vivid-r 11 @ 125w



- Cyc
- LX 6 Trim: 25'-0"
- RP
- Legs
- Border
- LX 5 Trim: 22'-6"
- Ladder Trim from Stage Deck: 11'4"
- Legs
- LX 4 Trim: 24'-9"
- Projector
- Legs
- Projector
- LX 3 Trim: 22'-6"
- Border
- Chandelier Trim: 11'-11"
- LX 2 Trim: 24'0"
- Legs
- Border
- Lamps Trim: 8'-5"
- PTZ Camera
- LX 1 Trim: 24'-6"
- Legs
- Border
- Black Panel
- Scrim
- Main
- Fire

Unit Number: Jobo 1

Color: Color

Channel Purpose: Channel

Project Title: BIP Rep Plot and The Tasters

The Tasters Directed by: Kristen Osborn

The University of Texas at Austin Theatre and Dance College of Fine Arts

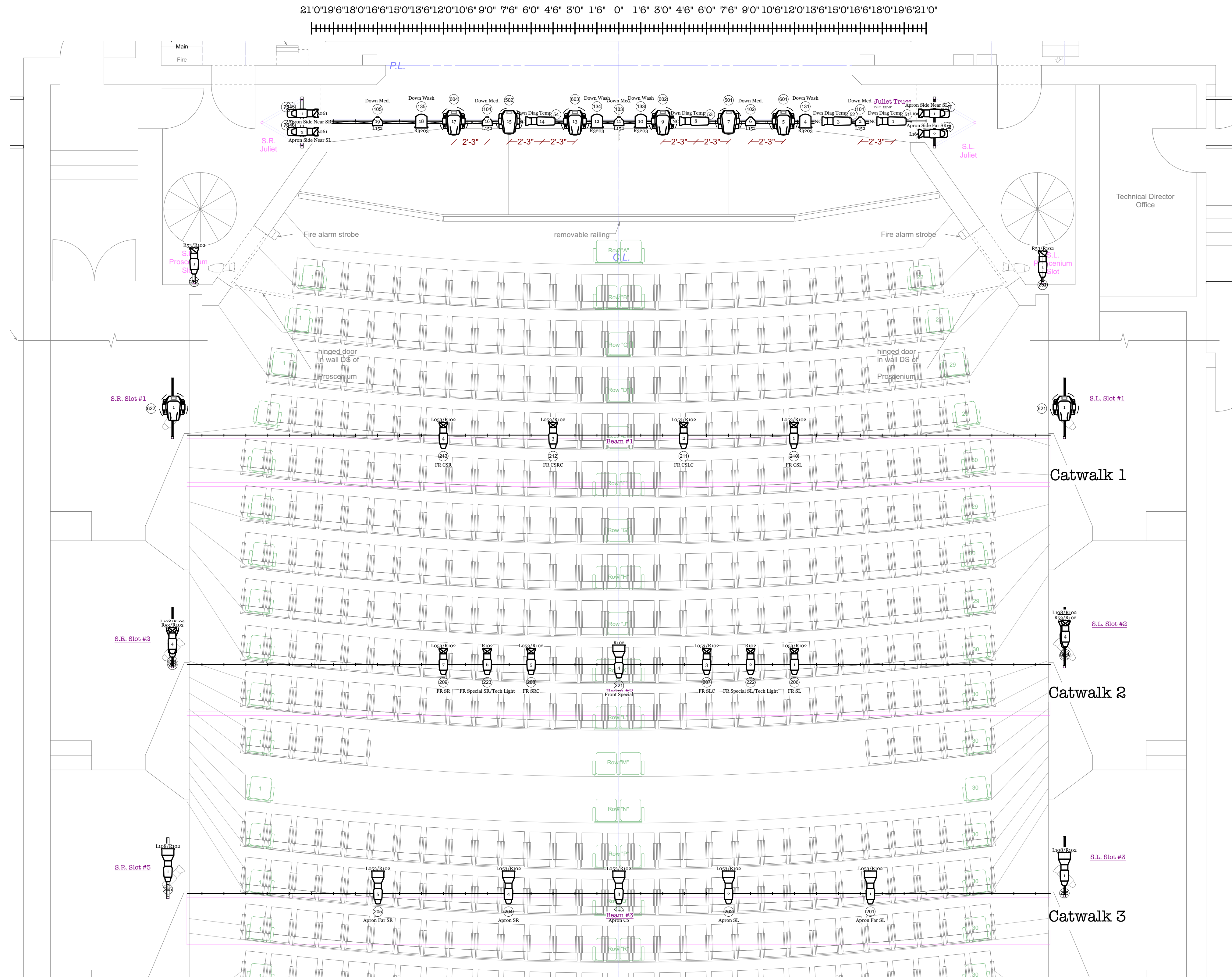
Producing Company: The University of Texas At Austin Theatre and Dance Department Wnship Drama Building 300 E 23rd St. Austin, TX 78712

Lighting Designer: Ron Collins

Scenic and Integrated Media Designer: Zoey Crow

Notes:
 Tick Marks on Electrics are marked at every 18" from CL. Instrumentation is hung 18" from one another unless indicated with dimensions.

Light Plot by: Ron Collins	Sheet Title: Overstage Plot
Additional Drafting by: Zoey Crow	Scale: 1/2" = 1'-0"
Production Electrician: Sarah Cantu	Sheet No. 1
Date: 6/16/21	of 5
REVISED 10/5/21	



1 Front of House Plot
Scale: 1/4" = 1'-0"

Symbol Key	
	High End SolaHyBeam 1000 @ 600 w
	High End Systems SolaFrame 750 @ 562 w
	ETC Source4 10deg @ 575w
	ETC Source4 19deg @ 575w
	ETC Source4 26deg @ 575w
	ETC Source4 36deg @ 575w
	ETC Source4 LED 36deg @ 140w
	ETC Source4 PAR MFL @ 575w
	ETC Source4 PAR WFL @ 575w
	Altman 8in Fresnel @ 1kw
	ChromaQ Colorforce II 72 @ 800 w

Example Legend	
	Color
	Unit Number
	Channel Purpose



Project Title: BIP Rep Plot and The Tasters
The Tasters Directed by: Kristen Osborn



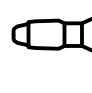
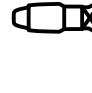







The University of Texas at Austin
Theatre and Dance
College of Fine Arts

Producing Company: The University of Texas At Austin Theatre and Dance Department
Winship Drama Building
300 E 23rd St. Austin, TX 78712

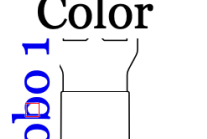
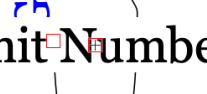


Lighting Designer: Ron Collins
Scenic and Integrated Media Designer: Zoey Crow

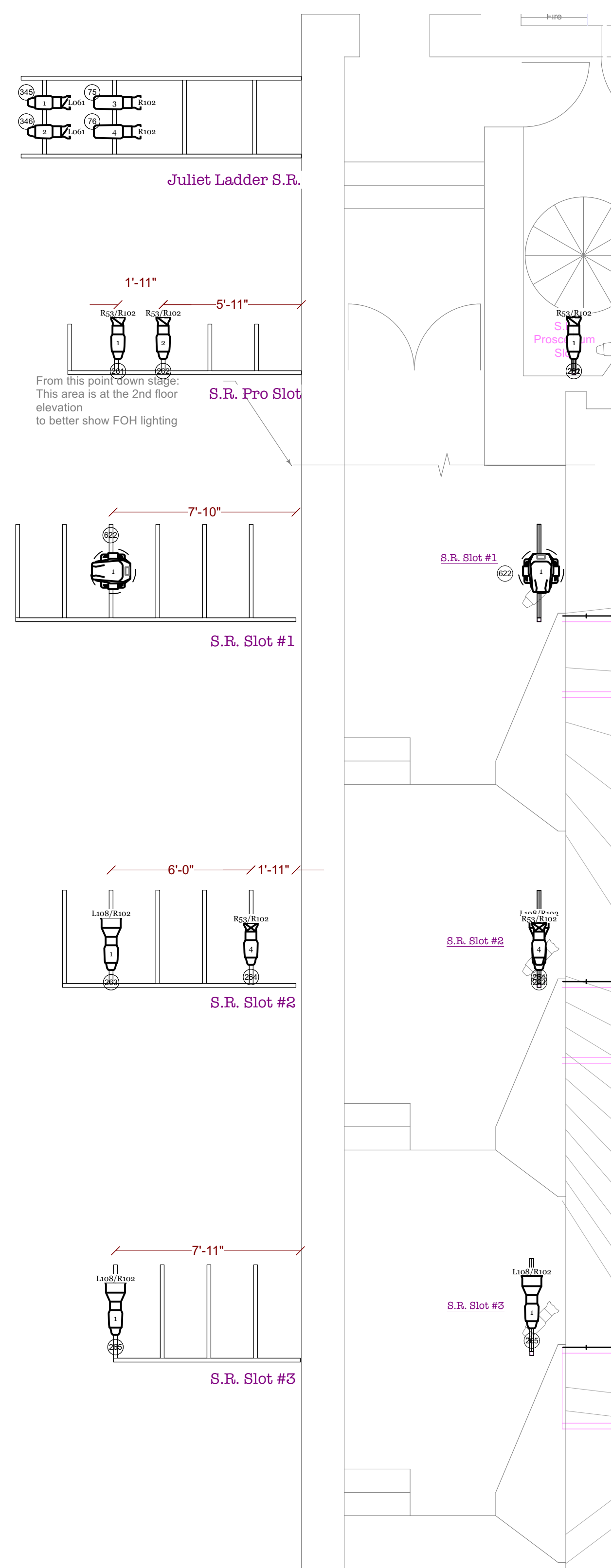
Light Plot by: Ron Collins	Sheet Title: [Front of House Plot]
Additional Drafting by: Zoey Crow	Scale: 1:1
Production Electrician: Sarah Cantu	Sheet No. 2
Date: 6/16/21	of 5
CAD File Name	

Juliet Truss drawn as a pipe with 18" tick marks for clarity in hanging.
Tick Marks on Electrics are marked at every 18" from CL. Instrumentation is hung 18" from one another unless indicated with dimensions.

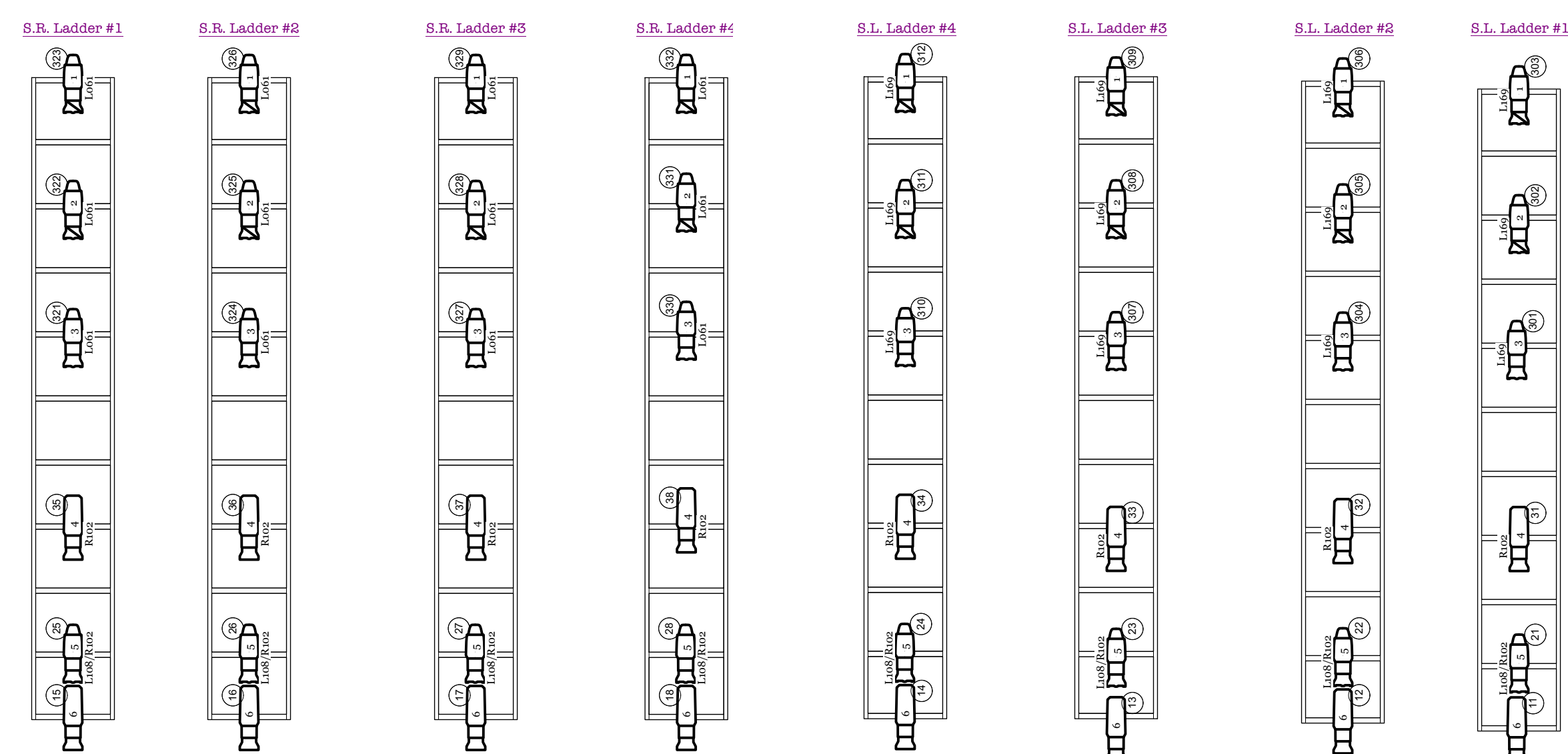
-  High End SolaHyBeam 1000 @ 600 w
-  High End Systems SolaFrame 750 @ 562 w
-  ETC Source4 10deg @ 575w
-  ETC Source4 19deg @ 575w
-  ETC Source4 26deg @ 575w
-  ETC Source4 36deg @ 575w
-  ETC Source4 LED 36deg @ 140w
-  ETC Source4 PAR MFL @ 575w
-  ETC Source4 PAR WFL @ 575w
-  Altman 8in Fresnel @ 1kw
-  ChromaQ Colorforce II 72 @ 800 w

Example Legend

-  Color 7000
-  Unit Number 1
-  Channel
-  Purpose

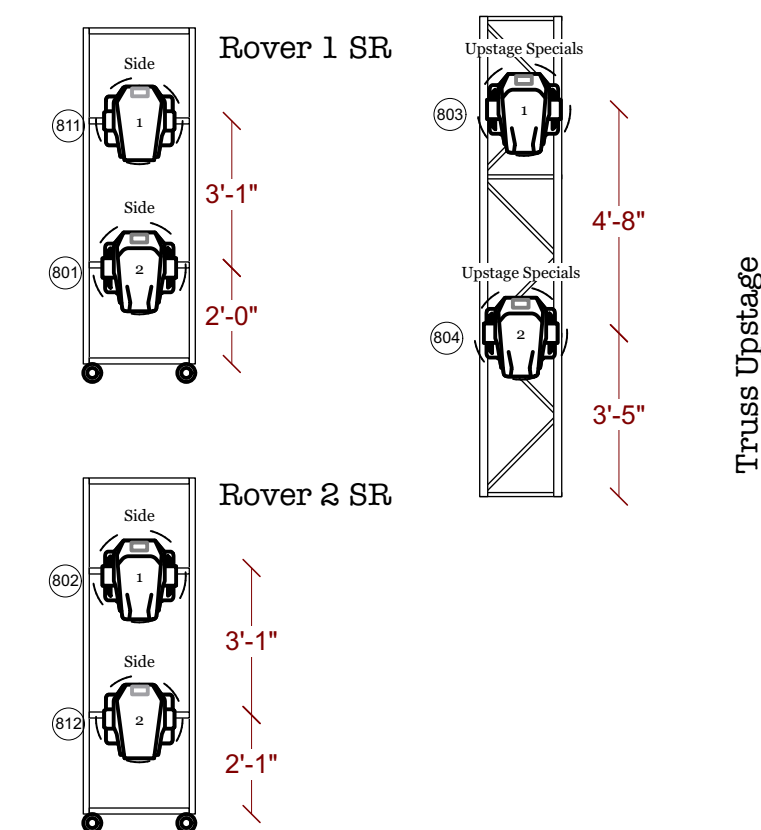


1 SR Slots 1-3
Scale: 1/4" = 1'-0"

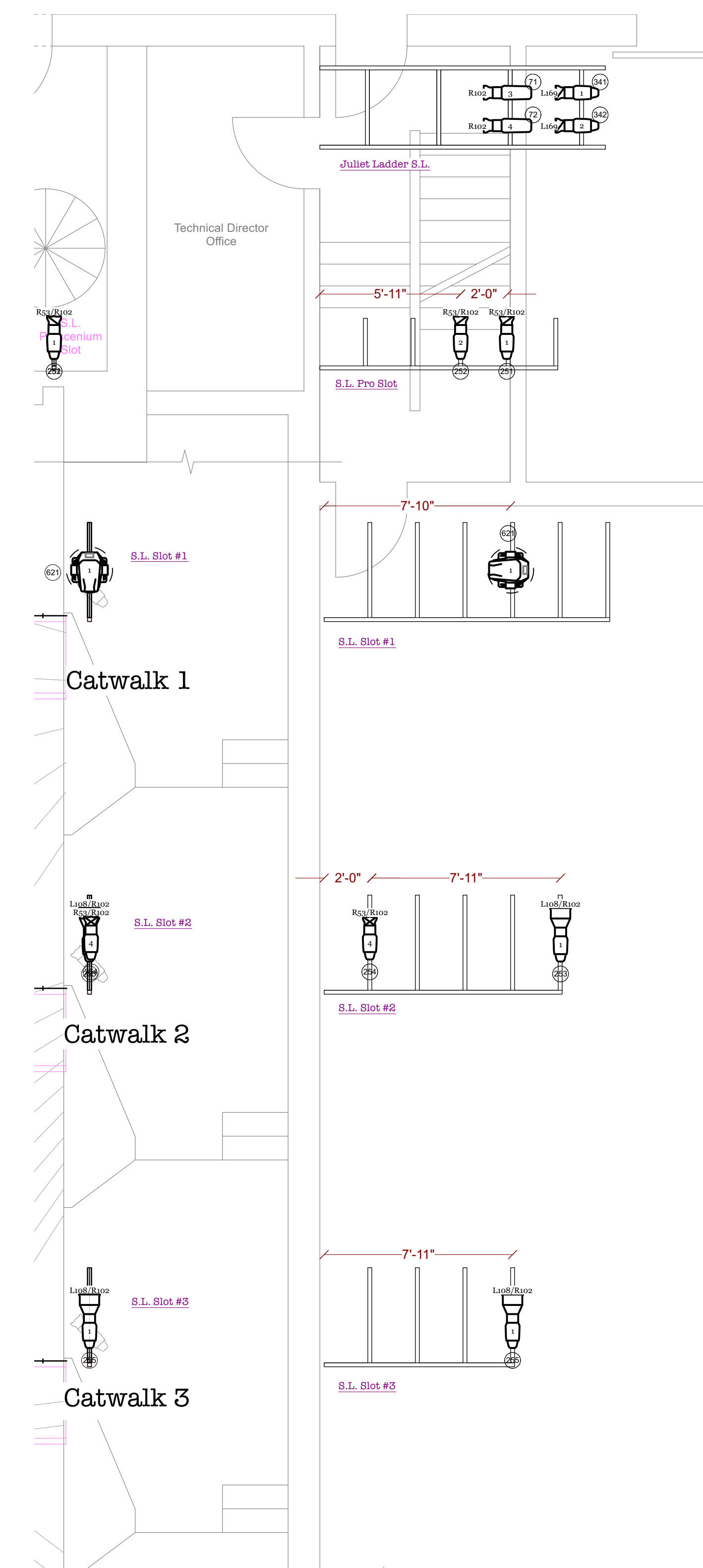


2 SR Ladders 1-4
Scale: 1/4" = 1'-0"

3 SL Ladders 1-4
Scale: 1/4" = 1'-0"



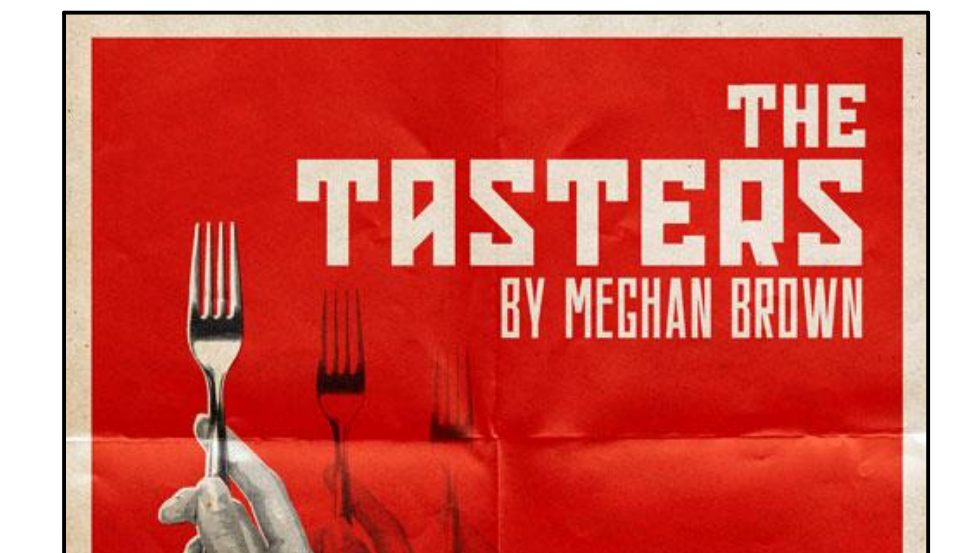
5 Floor Positions
Scale: 1/4" = 1'-0"



4 SL Slots 1-3
Scale: 1/4" = 1'-0"

Notes:	Light Plot by: Ron Collins	Scale: 1/4" = 1'-0"
Additional Drafting by: Zoey Crow	Production Electrician: Sarah Cantu	Sheet No. 3
Production Electrician: Sarah Cantu	Date: 6/15/21	of 5
Production Electrician: Sarah Cantu	CAD File Name	

Tick Marks on Electrics are marked at every 18' from CL

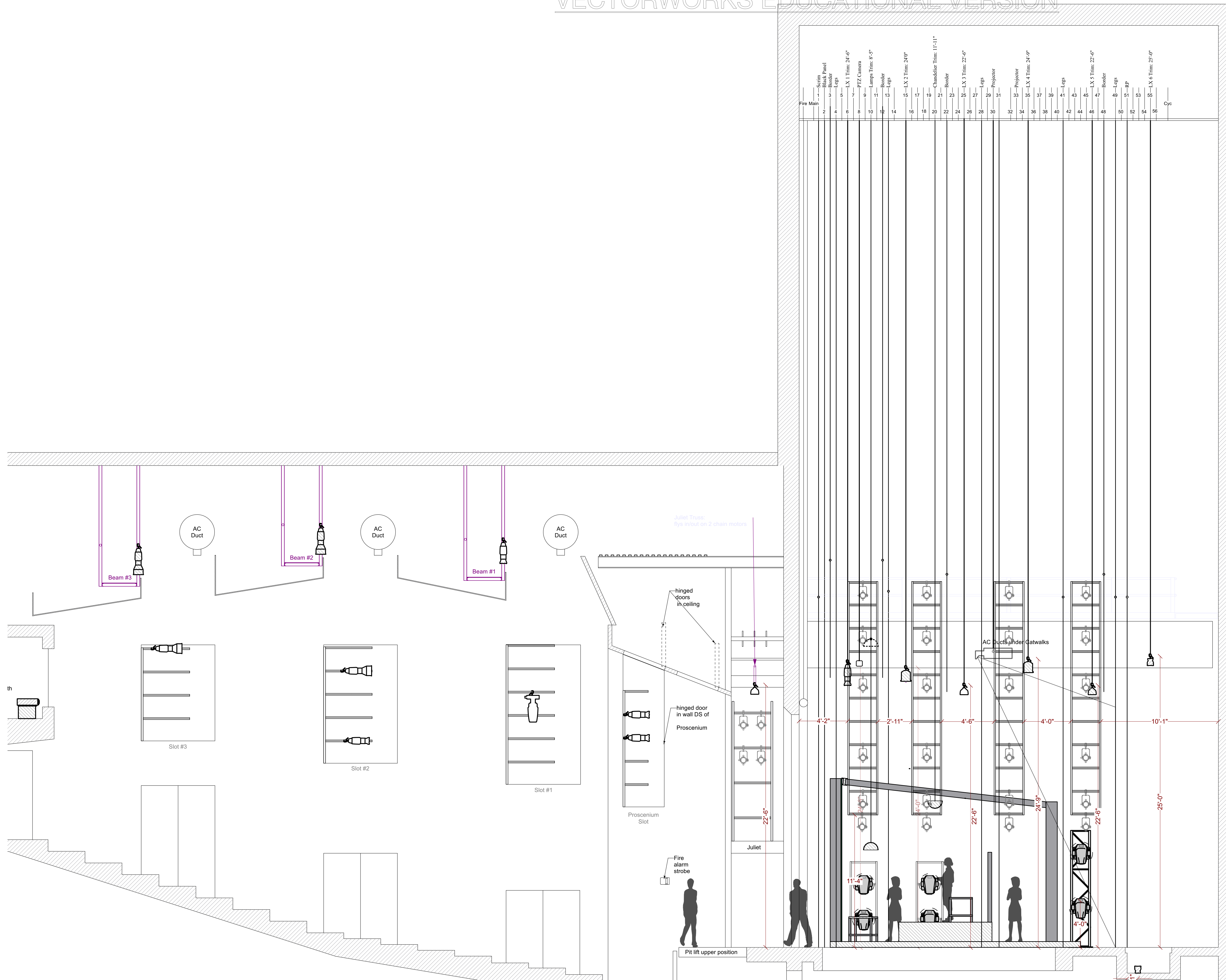


Project Title: BIP Rep Plot and The Tasters
The Tasters Directed by: Kristen Osborn

The University of Texas at Austin
Theatre and Dance
College of Fine Arts

Producing Company: The University of Texas At Austin Theatre and Dance Department
Winship Drama Building
300 E 23rd St. Austin, TX 78712

Lighting Designer: Ron Collins
Scenic and Integrated Media Designer: Zoey Crow



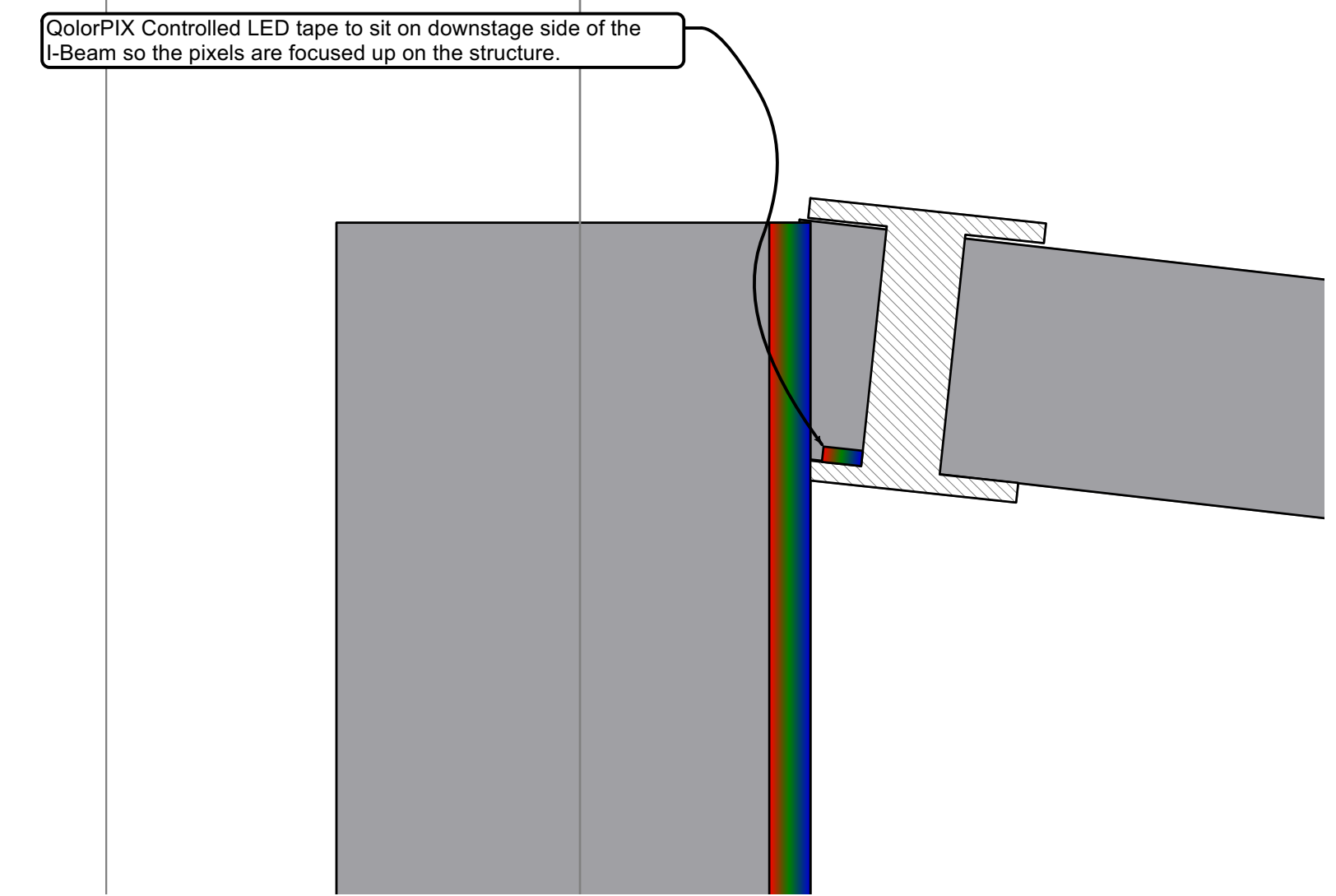
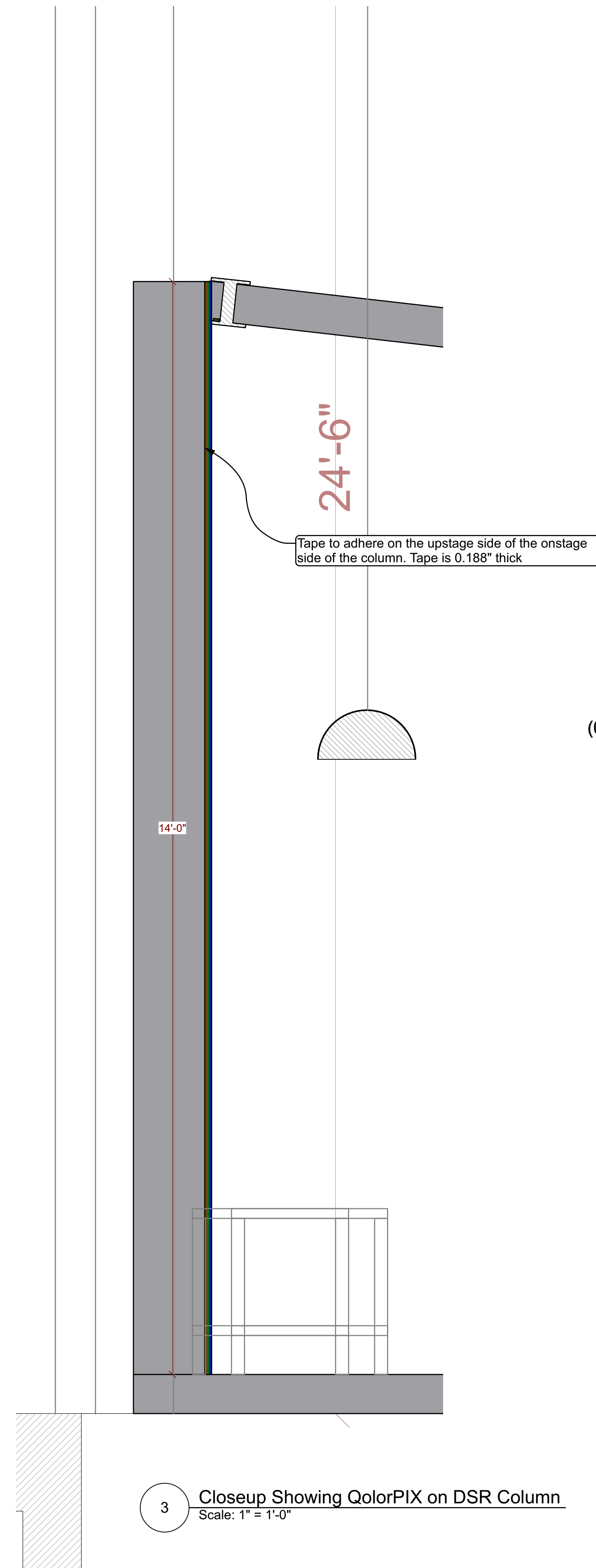
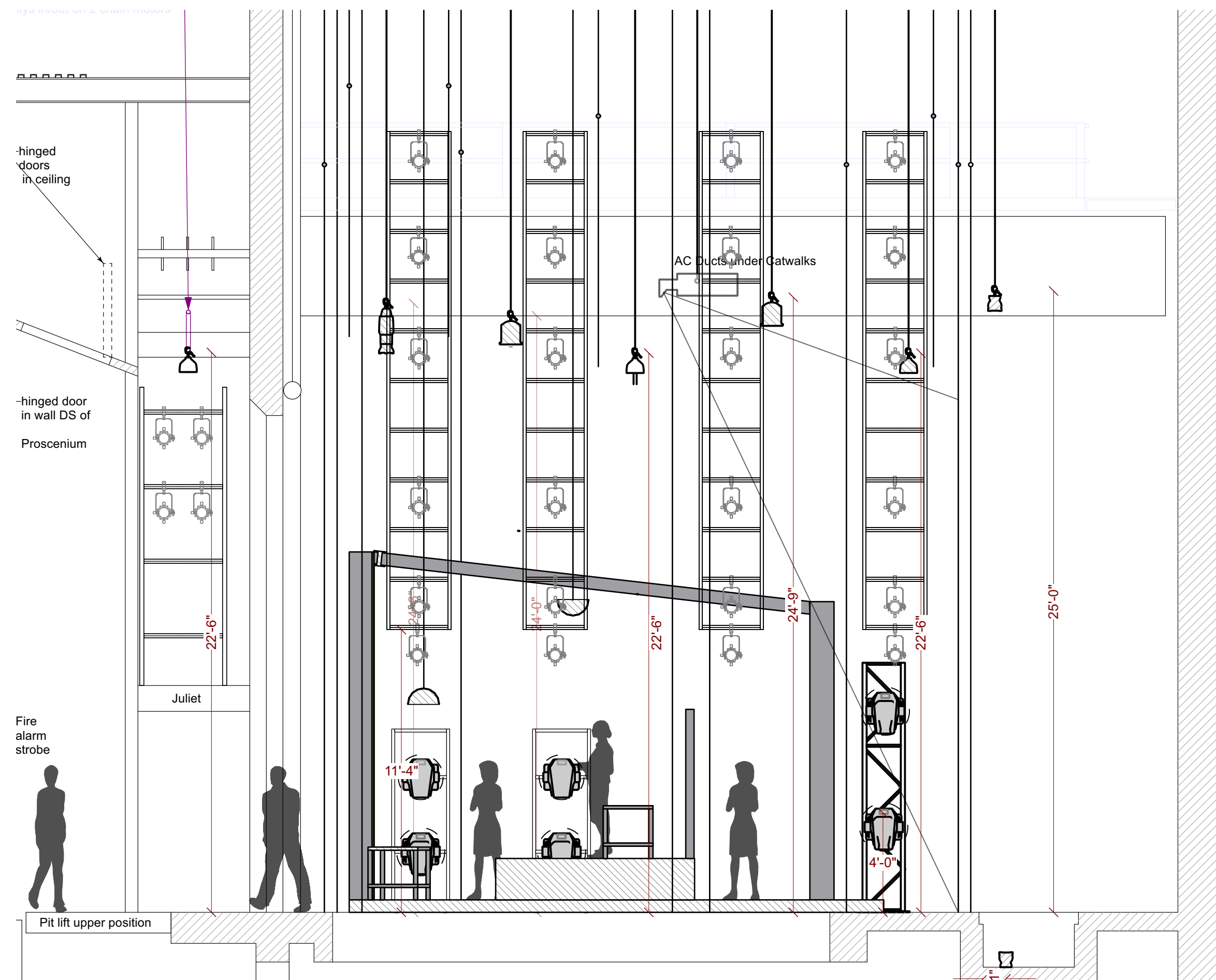
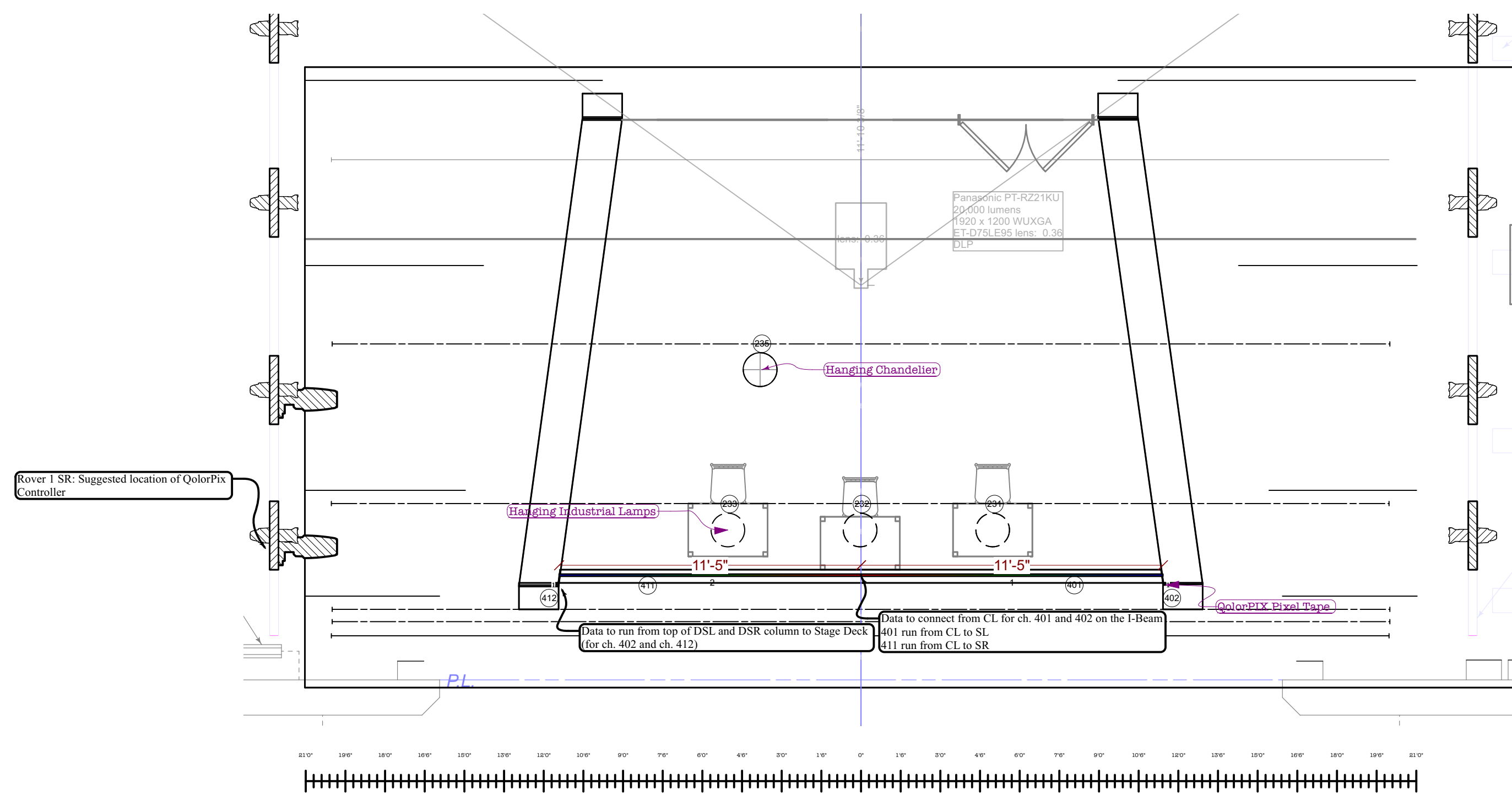
Project Title: **BIP Rep Plot and The Tasters**
 The Tasters Directed by: **Kristen Osborn**

The University of Texas at Austin
Theatre and Dance
 College of Fine Arts

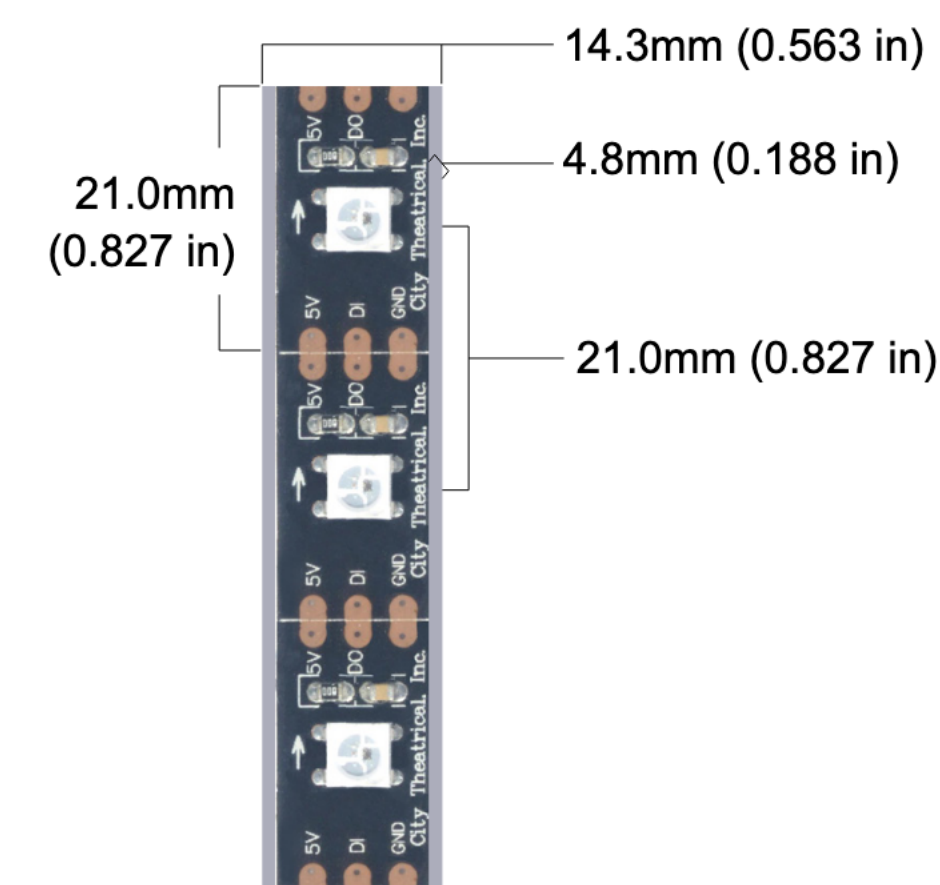
Producing Company: **The University of Texas At Austin Theatre and Dance Department**
 Winship Drama Building
 300 E 23rd St. Austin, TX 78712

Lighting Designer: **Ron Collins**
 Scenic and Integrated Media Designer: **Zoey Crow**

Light Plot by	Ron Collins	Sheet Title	Lighting Section
Additional Drafting by	Zoey Crow	Scale	1/4" = 1'-0"
Production Electrician	Sarah Cantu	Sheet No.	4
Date	6/23/21		of
	REVISED 10/5/21		5



4 Closeup Showing QolorPIX
Scale: 3" = 1'-0"



- QolorPIX Controlled LED Tape from City Theatrical Inventory List**
- (4) Rolls of City Theatrical QolorPIX LED Controlled Tape
 - (1) QolorPIX Controller
 - (133'-8") est. 4-pin XLB cable
- Note:** Tape to be set in 32 Channel Mode

3 Closeup Showing QolorPIX on DSR Column
Scale: 1" = 1'-0"



Project Title: BIP Rep Plot and The Tasters
The Tasters Directed by: Kristen Osborn

The University of Texas at Austin
Theatre and Dance
College of Fine Arts

Producing Company: The University of Texas At Austin Theatre and Dance Department
Winship Drama Building
300 E 23rd St. Austin, TX 78712

Lighting Designer: Ron Collins
Scenic and Integrated Media Designer: Zoey Crow
Kristen Osborn

Light Plot by: Ron Collins	QolorPIX Controlled LED Tape
Additional Drafts by: Zoey Crow	Scale: 1/4" = 1'-0"
Production Electrician: Sarah Cantu	Sheet No. 5
Date: 6/3/21	of 5
CAD File Name	5