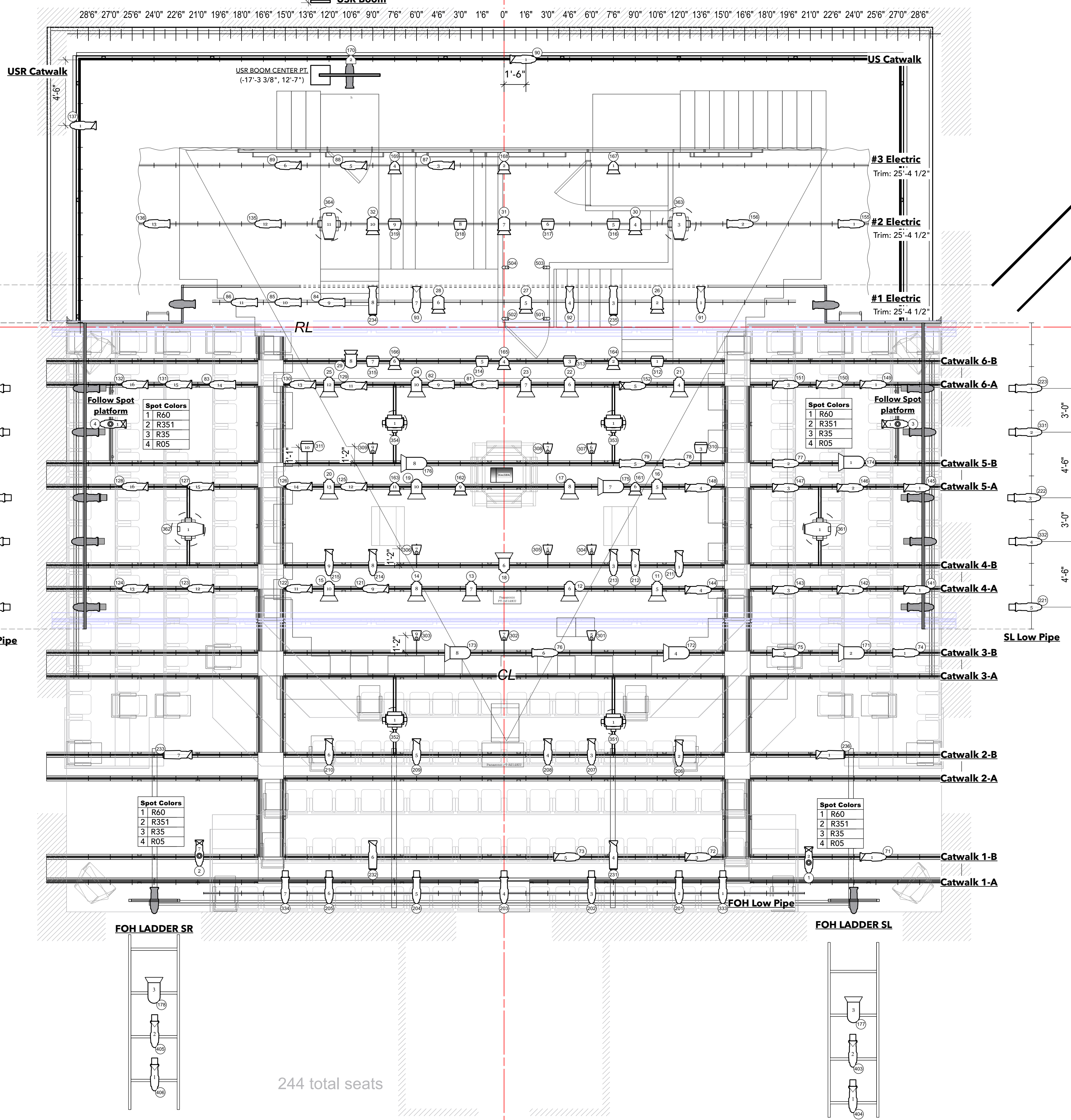
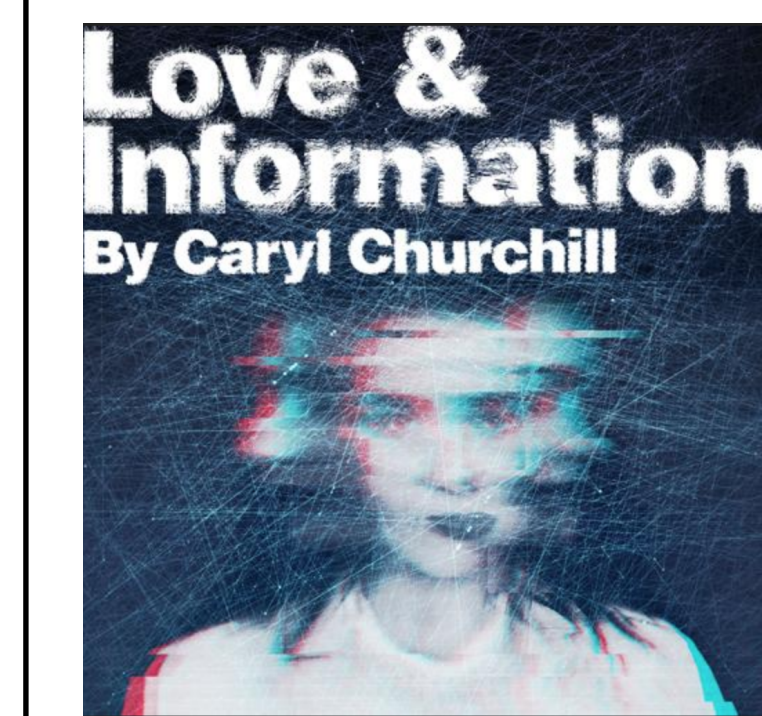
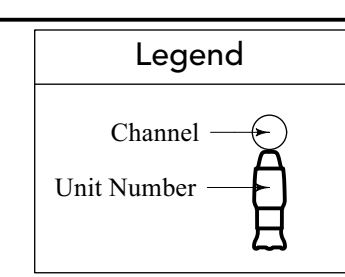


SR Pro Wall

SL Pro Wall



Conventional		
	ETC Source4 19deg @ 575w	5
	ETC Source4 26deg @ 575w	47
	ETC Source4 36deg @ 575w	34
	ETC Source4 50deg @ 575w	7
	Altman PAR 64 MFL @ 1KW	10
	ETC Source4 PAR MFL @ 575w	10
	Strand 6" Fresnelite @ 500/750/1000/2000w	15
	Altman 8in Fresnel @ 1kw	7
Practical		
	USITT PAR MR-16 Birdie-WFL @ 65w	4
Intelligent Fixtures		
	ETC Source4 LED 26deg @ 140w	4
	ETC Source4 LED 36deg @ 140w	2
	ETC ColorSource PAR Round @ 90w	9
	GLP FUSION PAR FP7 @ 220w	10
	High End Systems SolaSpot Pro CMY @ 480w	4
	High End Systems Sola Wash LED 37 @ 660w	4
Accessories		
	6.25in Top Hat	21
	7.5in 4 Leaf Barn Door	10
	10in Barn Door	8
	Iris	4



RON COLLINS
LIGHTING DESIGN

Producing Company
The University of Texas at Austin
Theatre and Dance
College of Fine Arts

THIS DRAWING REPRESENTS VISUAL CONCEPTS AND CONSTRUCTION SUGGESTIONS ONLY. THE LIGHTING DESIGNER IS UNQUALIFIED TO DETERMINE THE ELECTRICAL OR STRUCTURAL APPROPRIATENESS OF THE DESIGN AND WILL NOT ASSUME RESPONSIBILITY FOR IMPROPER ENGINEERING, CONSTRUCTION, OR USE. ALL MATERIALS AND CONSTRUCTION MUST MEET THE MOST STRINGENT LOCAL SAFETY AND FIRE CODES.

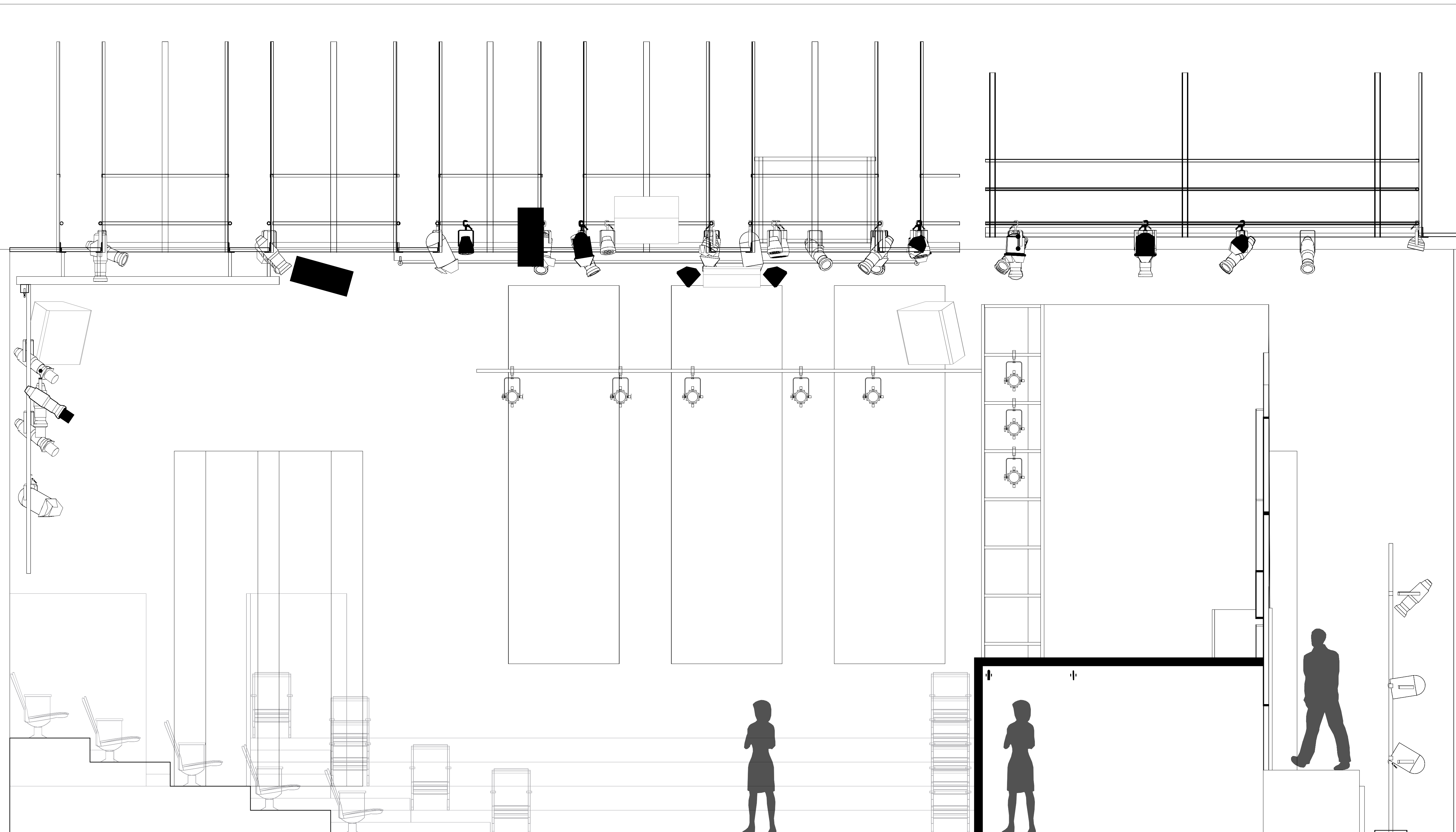
Director: **Mike Steele**
Scene Designer: **Inji Ha** Integrated Media Designer: **John Erickson**

Light Plot by: **Ron Collins** Scale: **1/4" = 1'-0"**

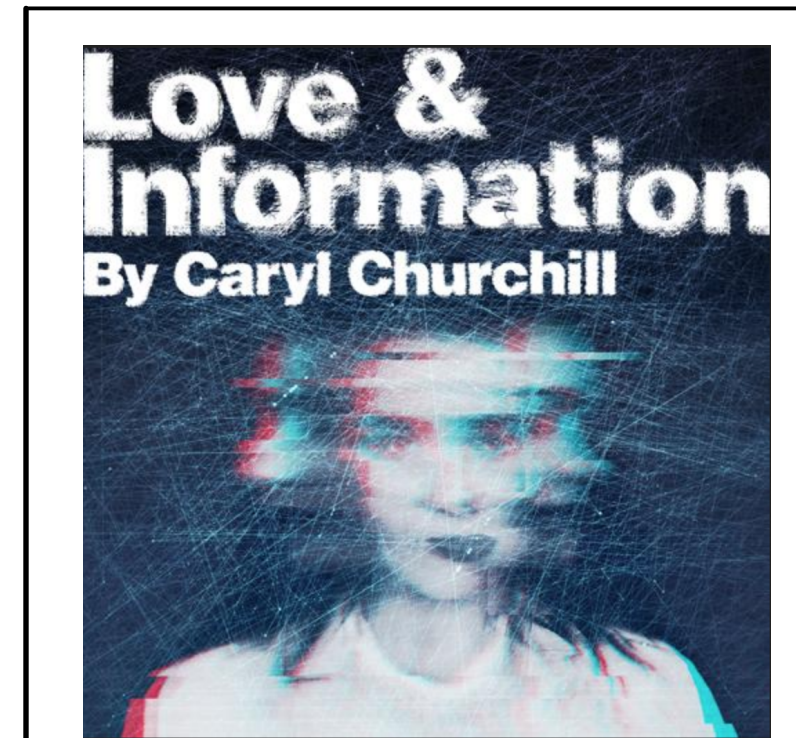
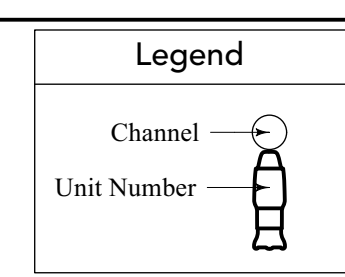
Scene Drafting by: **Inji Ha** Sheet No.: **Sht-1**

Production Electrician: **Sarah Cantu** Date: **3/3/22** of **2**
Final 4-11-22

Notes:
ALL TRIMS LISTED ARE FROM DECK TO CENTER OF PIPE/C-CLAMP
FIXTURES ARE HUNG ON 18" CENTER



Symbol Key		
Conventional		
	ETC Source4 19deg @ 575w	5
	ETC Source4 26deg @ 575w	47
	ETC Source4 36deg @ 575w	34
	ETC Source4 50deg @ 575w	7
	Altman PAR 64 MFL @ 1KW	10
	ETC Source4 PAR MFL @ 575w	10
	Strand 6" Fresnelite @ 500/750/1000/2000w	15
	Altman 8in Fresnel @ 1kw	7
Practical		
	USITT PAR MR-16 Birdie-WFL @ 65w	4
Intelligent Fixtures		
	ETC Source4 LED 26deg @ 140w	4
	ETC Source4 LED 36deg @ 140w	2
	ETC ColorSource PAR Round @ 90w	9
	GLP FUSION PAR FP7 @ 220w	10
	High End Systems SolaSpot Pro CMY @ 480w	4
	High End Systems Sola Wash LED 37 @ 660w	4
Accessories		
	6.25in Top Hat	21
	7.5in 4 Leaf Barn Door	10
	10in Barn Door	8
	Iris	4



RON COLLINS
LIGHTING DESIGN

Producing Company
 The University of Texas at Austin
Theatre and Dance
College of Fine Arts

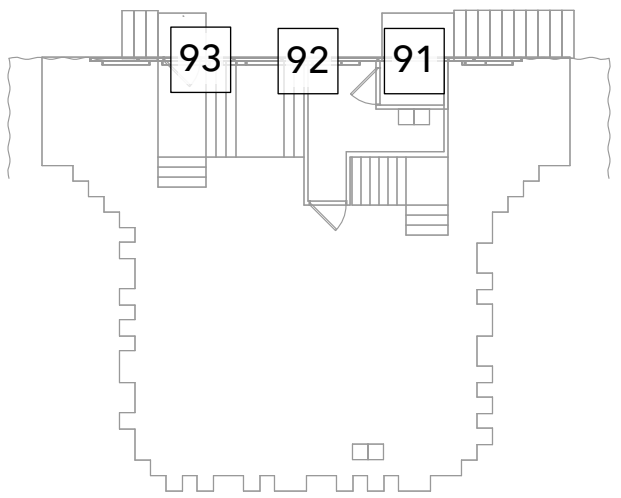
THIS DRAWING REPRESENTS VISUAL CONCEPTS AND CONSTRUCTION SUGGESTIONS ONLY. THE LIGHTING DESIGNER IS UNQUALIFIED TO DETERMINE THE ELECTRICAL OR STRUCTURAL APPROPRIATENESS OF THE DESIGN AND WILL NOT ASSUME RESPONSIBILITY FOR IMPROPER ENGINEERING, CONSTRUCTION, OR USE. ALL MATERIALS AND CONSTRUCTION MUST MEET THE MOST STRINGENT LOCAL SAFETY AND FIRE CODES.

Director:	Mike Steele
Scene Designer:	Inji Ha
Integrated Media Designer:	John Erickson

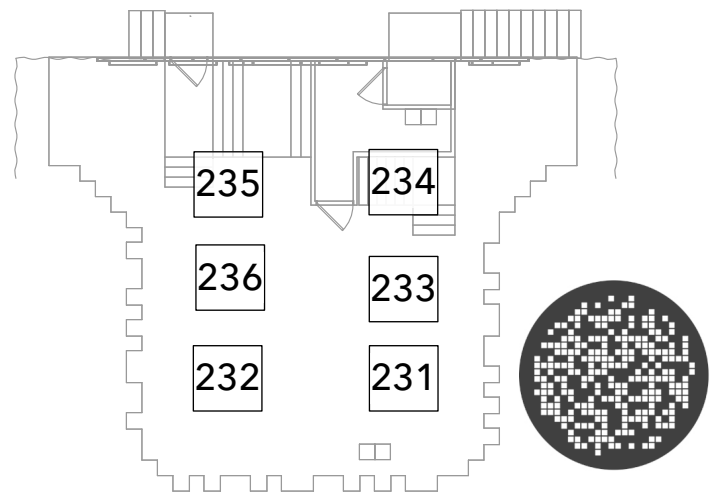
Light Plot by:	Ron Collins	Sheet Title:	Section
Scene Drafting by:	Inji Ha	Scale:	1/4" = 1'-0"
Production Electrician:	Sarah Cantu	Sheet No.:	Sht-2
Date:	2/21/22		of
	Final 4-11-22		2

Notes:
ALL TRIMS LISTED ARE FROM DECK TO CENTER OF PIPE/CLAMP
FIXTURES ARE HUNG ON 18" CENTER

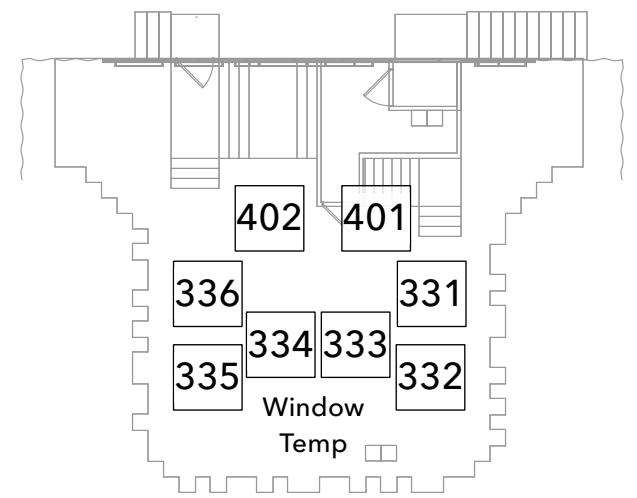
Wall Template



LED Cross Template



Low Specials

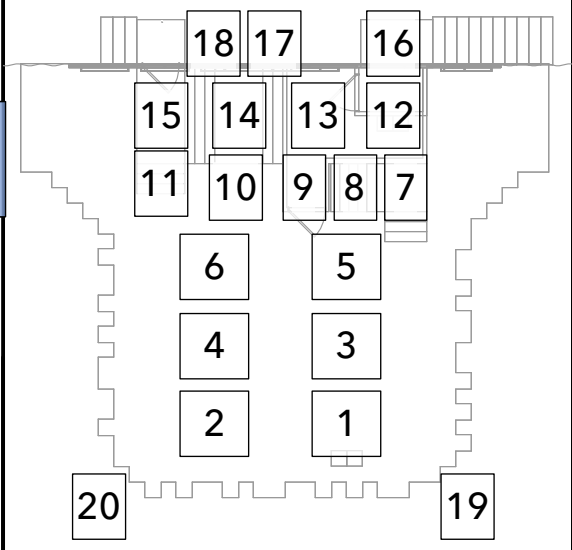


RON COLLINS LIGHTING DESIGN

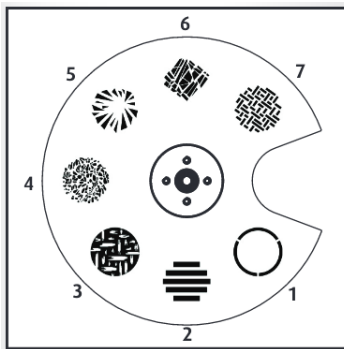
Love and Information
Oscar Brockett Theatre - UT Austin

Ari Jamieson
Assistant Lighting Designer

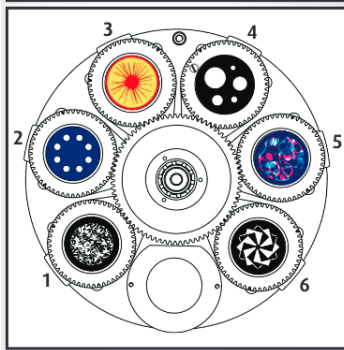
Focus Palettes



Solaspot

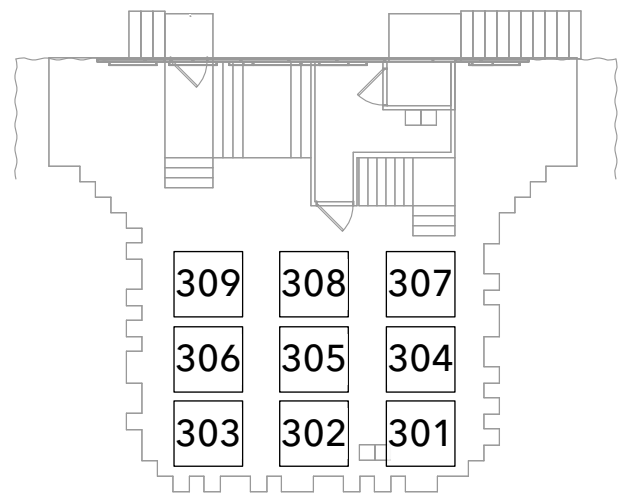


- Fixed Gobo Wheel**
- 1- Tunnel
 - 2- Bars
 - 3- Strokes
 - 4- Foliage
 - 5- Burst
 - 6- Fracture
 - 7- Crosshatch

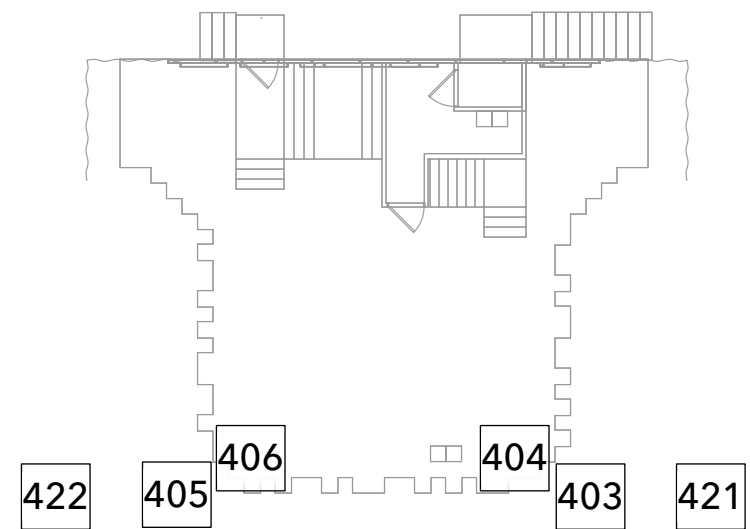


- Rotating Gobo Wheel**
- 1- Dense Foliage
 - 2- Gatlin
 - 3- PsySpin
 - 4- Bubbles
 - 5- Lumiol
 - 6- Paper Stack

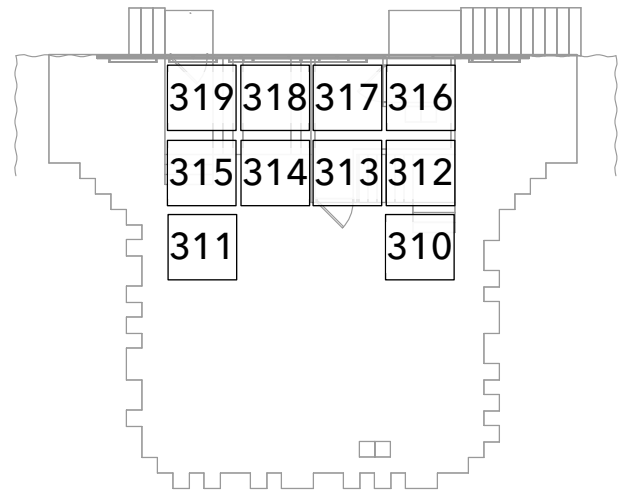
Down LED- ColorSource



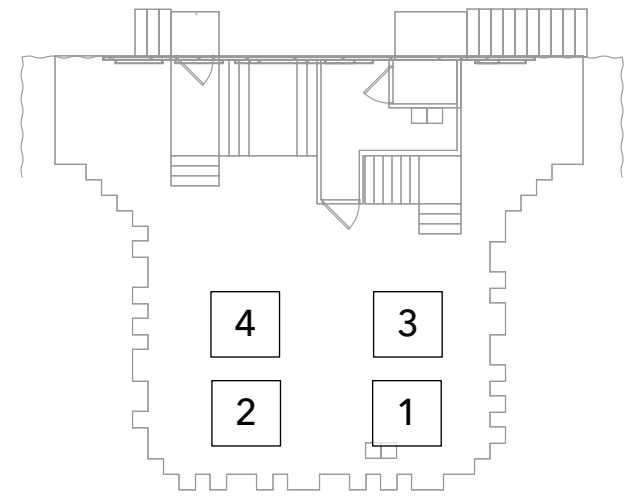
Voms



Down LED- GLP



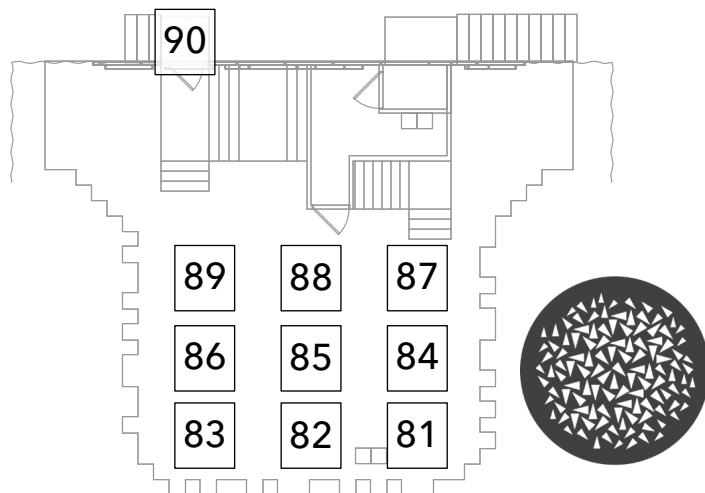
Sola Wash



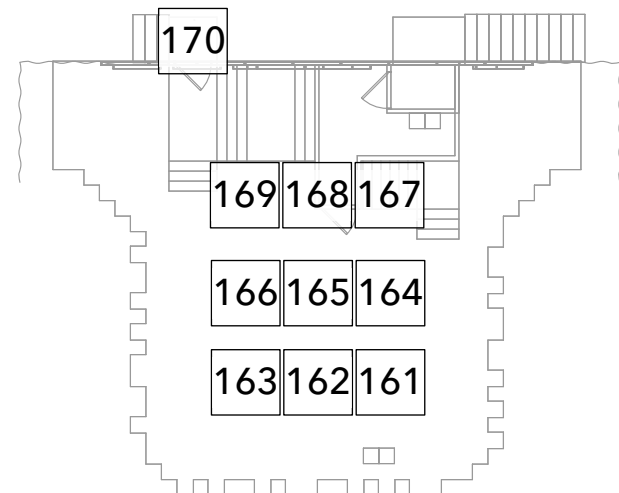
Color Palettes

CP1: R075	CP6: L600
CP2: R082	CP7: R385
CP3: L744	CP8: R087
CP4: R058	CP9: R079
CP5: R025	CP10: L110
CP11: R382	

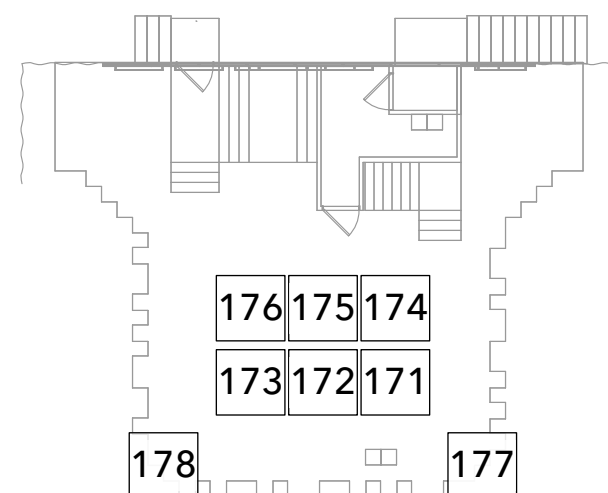
BCK Diagonal - R54



Back Fill - L748



Par HI Side- R4215



RON COLLINS
LIGHTING DESIGN

Love and Information
Oscar Brockett Theatre - UT Austin

Ari Jamieson
Assistant Lighting Designer

USR Boom

- 411 **Traffic Flash**
- 412 **Shadow Back**
- 413 **Visitor Shadow**

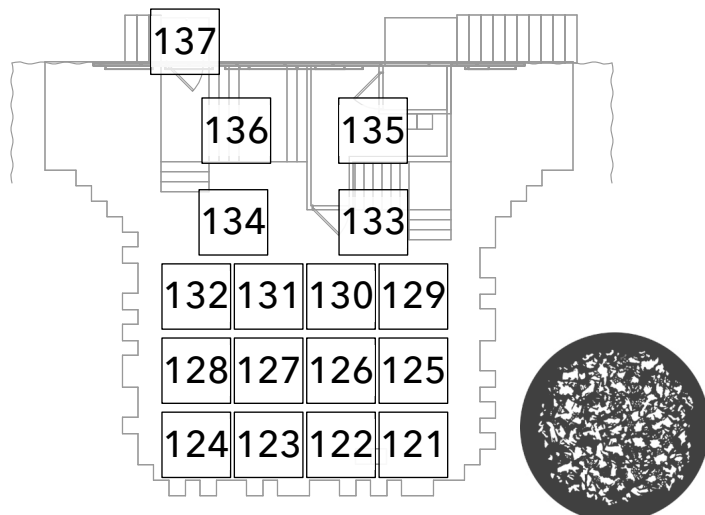
Practical

- 504 503
- 502 501

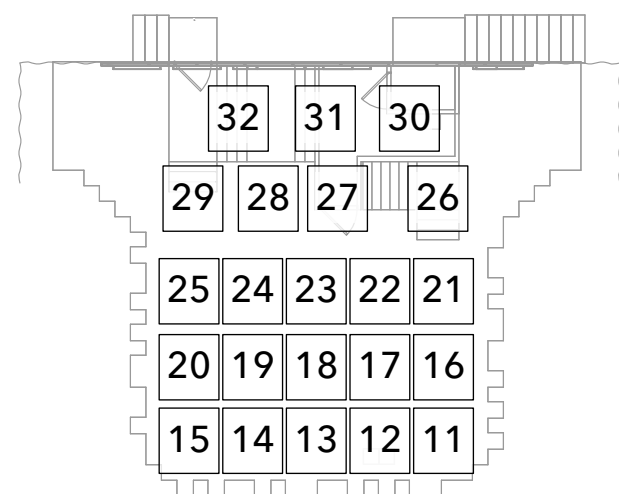
- 420 **Hazer**

- 510 **House Lights**
- 511 **Work Lights**

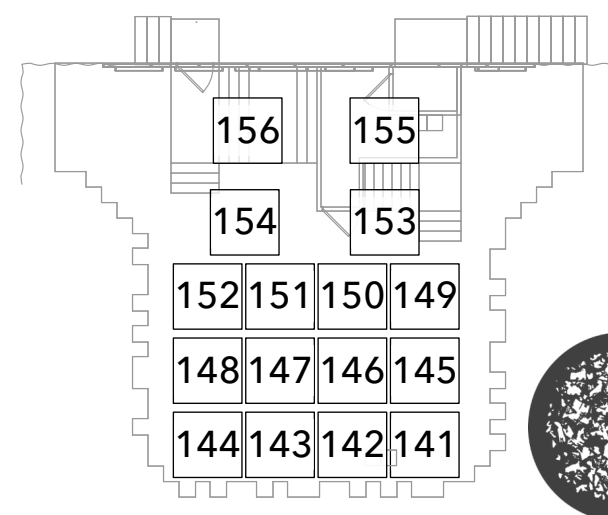
> HI SIDE - L702



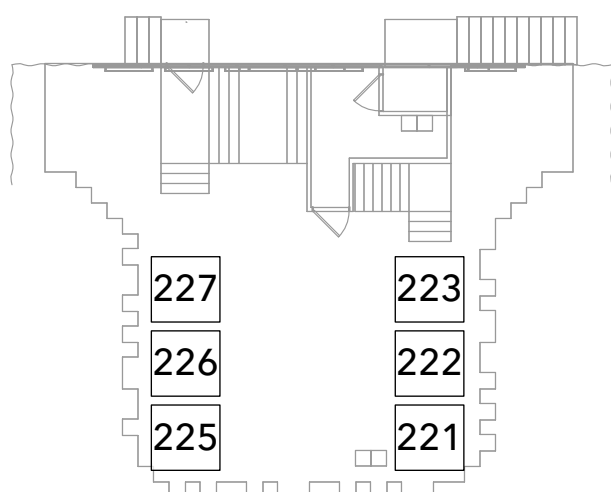
Down Specials - L725



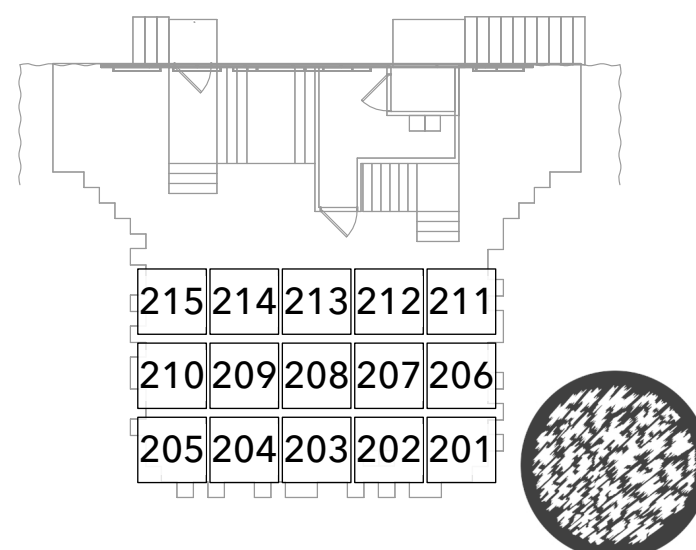
< HI SIDE - R3202



Low Front Fill - R3315



Front - L503



Frnt Diagonal - L728

